



# Humanitarian Shelter and Settlements Assistance

## Global Disaster Trends, Practices, Challenges and Lessons

2013 Fair Housing and Civil Rights Conference  
Disasters, Emergencies and Civil Rights

Mohamed Hilmi  
InterAction



SHELTER AND SETTLEMENTS **WORKING GROUP**

# Humanitarian Shelter and Settlements

- 1. InterAction – Background** (3 min)
- 2. Complexities of global Humanitarian Emergencies** (5 min)
- 3. Rights, Vulnerabilities, and Stakeholders** (4 Min)
- 4. Takeaways and Questions** (3 min)

# **1. InterAction – Background**

---

- **Largest alliance of U.S.-based NGOs**
- **Around 190 NGO members**
- **Members work in every developing country**
- **Total funding exceed \$13 billion a year (2009 estimate)**
- **InterAction seeks to shape important policy decisions and standards of practice**
- **Members are at the forefront in responding to humanitarian crises and disasters worldwide**

# 1. Shelter and Settlements **Working Group**

---

**Improve the collaboration, capacity, practices and programmatic impacts of humanitarian shelter assistance**

**Open to NGOs, practitioners, academics, private sector, trade groups, and humanitarian policy advocates. Funded by USAID/OFDA**

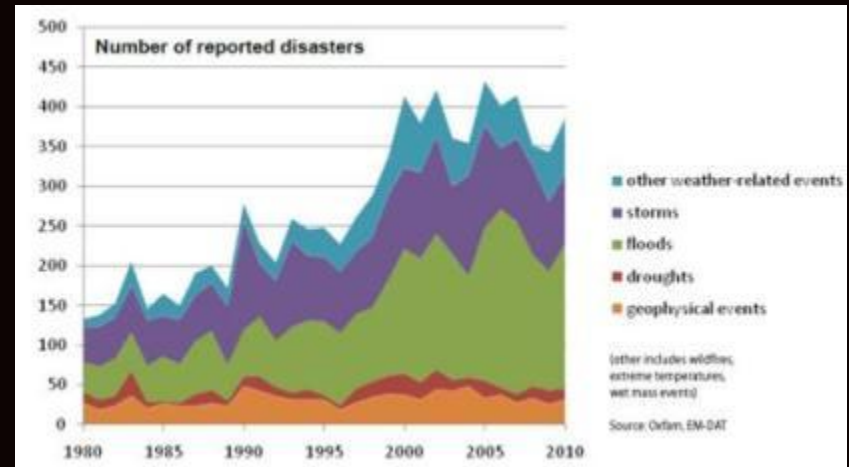
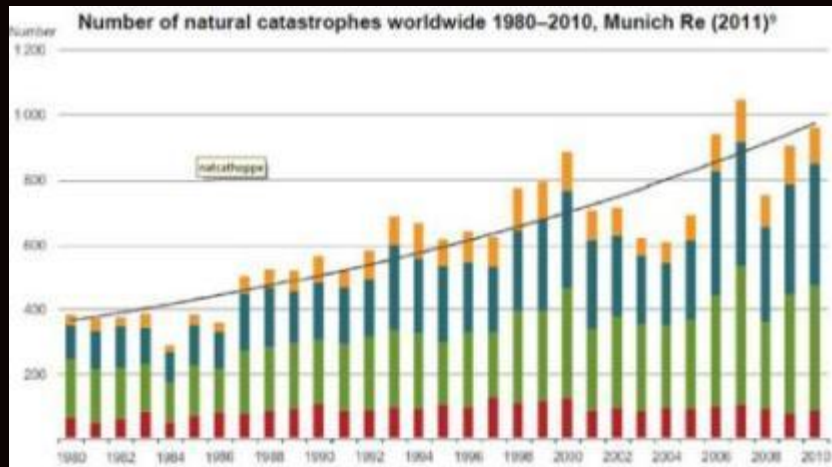


## 2. Complexities of Humanitarian Emergencies



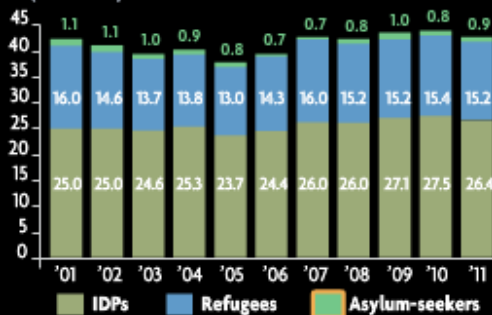
## 2. Trends

### Natural Disasters and Crises; Rural and Urban



*For the fifth consecutive year the number of forcibly displaced people worldwide exceeded 42 million, a result of persistent and new conflicts in different parts of the world.*

Global forced displacement | 2001–2011 (end-year)  
(in millions)



42 Million displaced – 75% in long term displacements (2011)

Urban Refugees

Climate Refugees

IDPs



## 2. Trends



UNHCR



Bangladesh

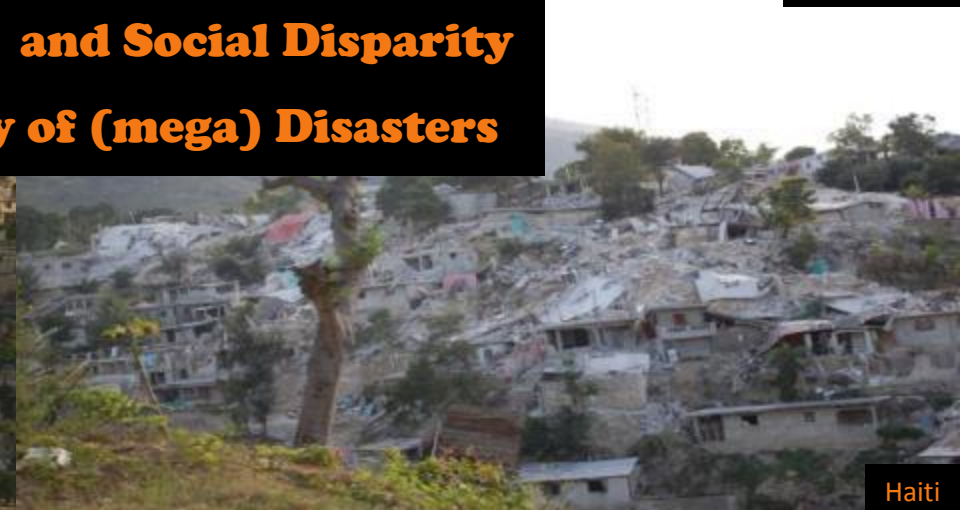
**Urbanization**

**Increasing Economic and Social Disparity**

**Increasing Frequency of (mega) Disasters**



Cordaid Haiti



Haiti

## 2. Trends

### Urban:

More than 180,000 people move in to cities every day

22% (1.5 Billion) of world population live in 600 cities (Produce 60% of global GDP)

In 20 years, China will add more than 350m people to its cities

### Socio-economic disparities

75% of Indian population earns less than \$2 a day

Mumbai's 2030 GDP will be \$265 Billion

Kinshasa's population will double in about 12 years to 15m

More than the  
entire  
population of  
the United  
States

### Increasing frequency of mega-disaster



Conditions depicted are experienced by nearly 1 of every 6 human beings: 1 in 4 in 2030



**People who lost their shelters**

---

**Pakistan floods 2010/2011/2012**

**+**

**Haiti 2010 Earthquake**

**=**

**Population of New York + Los Angeles**

**=**

**18 million**

## **3. Rights, Vulnerabilities, and Stakeholders**

# Humanitarian Principles

## Principles of Conduct

### NGOs in Disaster Response Programmes:

- 1) Humanitarian imperative
- 2) Regardless of the race, creed or nationality of the recipients - **Need based**
- 3) Aid not be used to further a particular political or religious standpoint
- 4) Not act as instruments of government foreign policy
- 5) Respect culture and custom
- 6) Build disaster response on local capacities
- 7) Involve programme beneficiaries in the management of relief aid
- 8) Reduce future vulnerabilities
- 9) Accountability to beneficiaries and governments
- 10) Recognize disaster victims as dignified human beings, not hopeless objects



# Standards of Practice

## **Sphere Standards**

*The Sphere Handbook Humanitarian Charter and Minimum Standards in Humanitarian Response establishes shared principles and a set of universal minimum standards in core areas of humanitarian response.*

*It offers common language and provides guidance for effective and accountable humanitarian response and advocacy*

<http://www.sphereproject.org/>

# Humanitarian Mandate and Guidelines

**Most vulnerable population**

**RIGHTS**

**Local capacity and  
community driven**

**Saving lives**

**Internationally accepted minimum  
standards (SPHERE)**

**Humanitarian imperative**

**Meeting basic needs**

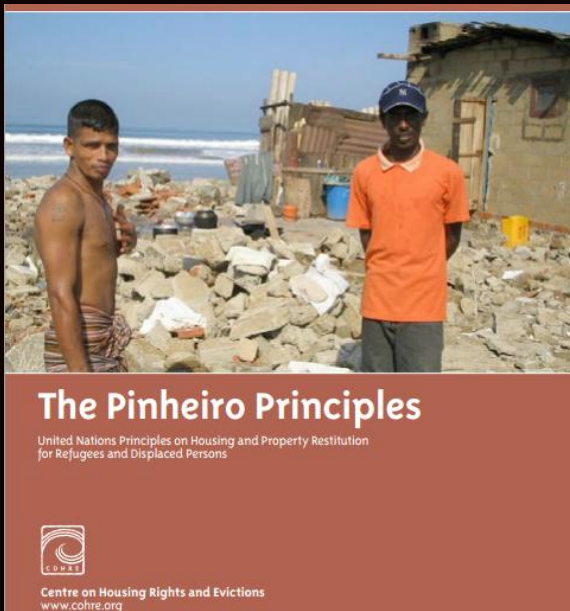
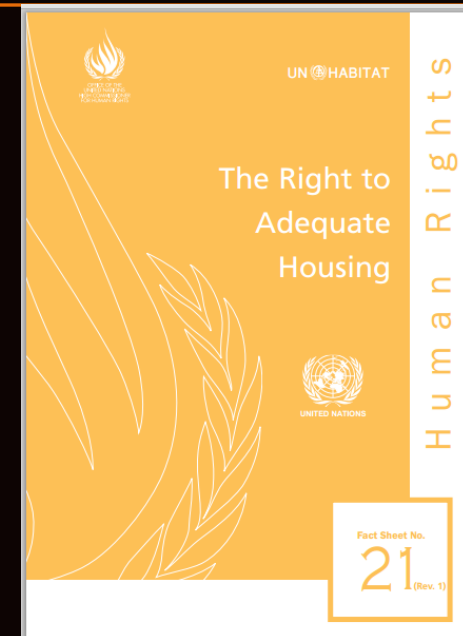
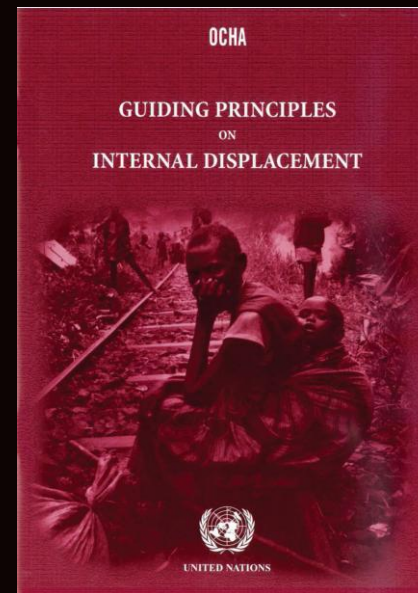
**Protection**

**Reduce future vulnerabilities (DRR)**

**Reduce social and economic  
vulnerabilities (DRR)**

# Humanitarian Mandate and Guidelines

**Housing as a Human Right-International and Regional Standards :** "States Parties to the present Covenant recognize the right of everyone to an adequate standard of living for their families, including adequate . . . housing, and to the continuous improvement of living conditions."



**IASC OPERATIONAL  
GUIDELINES  
ON THE PROTECTION  
OF PERSONS  
IN SITUATIONS OF  
NATURAL DISASTERS**

# Takeaways

---

- **Put people at the center of your assistance - rights**
- **Build local capacity – people, organizations and institutions**
  - **Local Ownership**
- **Preparedness**
- **Apply lessons learned**

Lessons from Philippines, Pakistan and Haiti





?

# Humanitarian Shelter and Settlements Assistance

## **Temporary living spaces (Self and assisted construction)**

Material inputs, shelter kits, information

Technical assistance

Support community led construction of living spaces

## **Temporary settlements (Camps - spontaneous or planned)**

Planning and erection of a central or distributed temporary settlement

Improvement of spontaneous camps

Site improvement, temporary infrastructure

Provision of services

## **Site improvements**

Rubble and debris removal

Cash for work

Salvage materials

# Humanitarian Shelter and Settlements Assistance

---

## Communal centers

Very temporary assistance in upgrading facilities/structures

Voluntary relocation

Assistance to move to a safer location

## Non-structural support

Hosting

Rental subsidy

Conditional and non-conditional cash assistance

Vouchers

## Repairs

Housing repairs to achieve minimally adequate living space

# Humanitarian Shelter and Settlements Assistance

---

## Improvement of local technical capacity

- Basic land and physical planning

- Safer construction techniques

## Transitional shelter

- Community-centered construction assistance

- Core, incremental or recovery shelters

## Settlements assistance

- Basic community, neighborhood or rural improvements

- (Mitigate hazards, accelerate recovery and reconstruction)



# Humanitarian Shelter and Settlements Assistance

---

## **Some things to stay away from** (whenever possible)

Pre-fabs

Relocation of communities

Creating new camp-like settlements